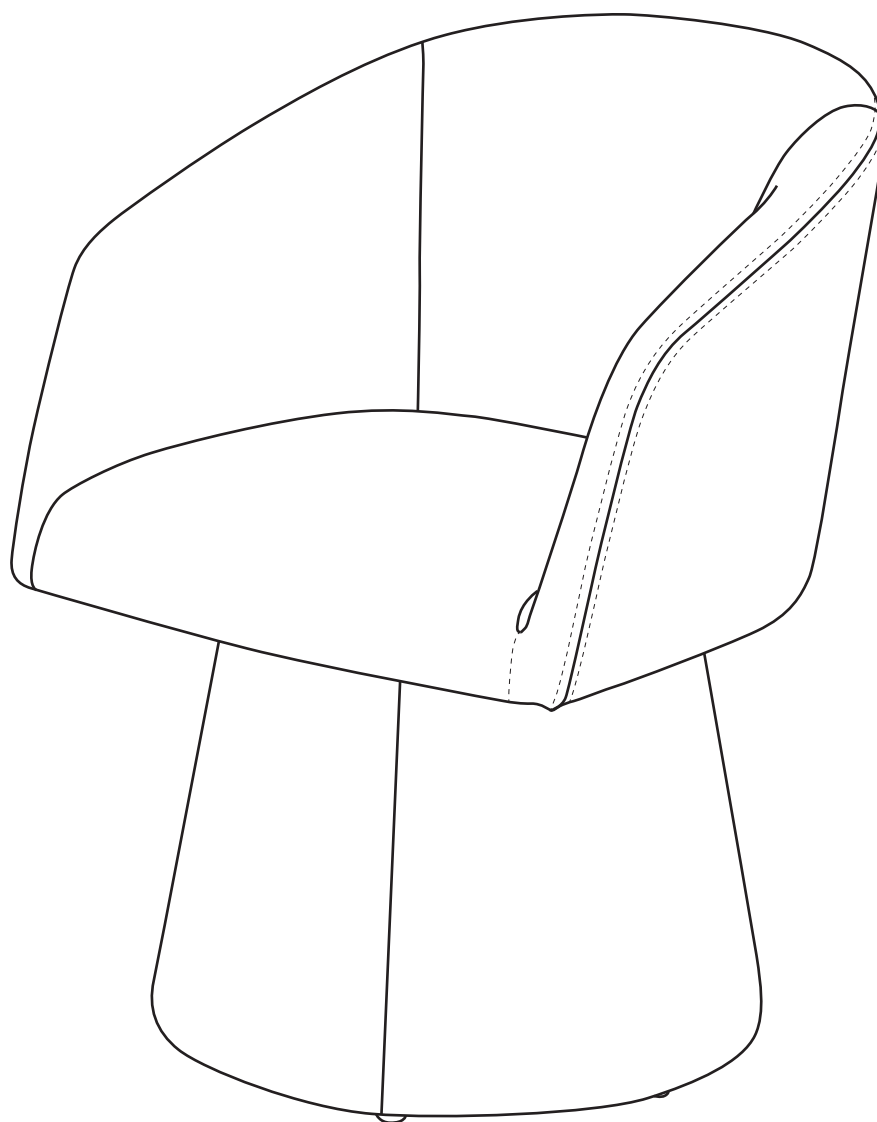


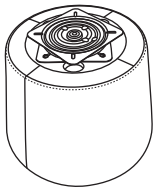
ASSEMBLY INSTRUCTION

KF.Y2156

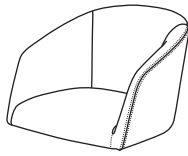


Thank you for purchasing this quality product. Be sure to check all packing material carefully for small parts which may have come loose inside the carton during shipment. Identify and count all parts and compare with the parts list below:

Part List:



A x 1
Chair Base

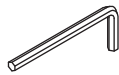


B x 1
Chair Body

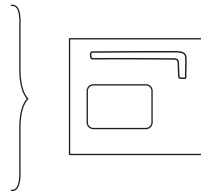
Hardware List:



H1 x 4
Nylok Bolt
(M6x30mm)

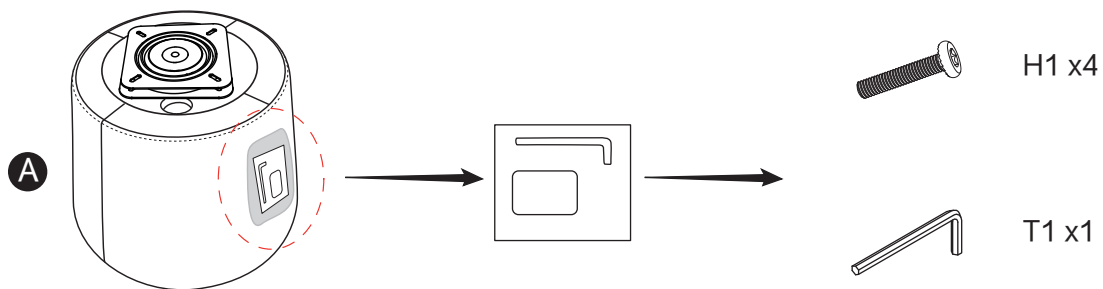


T1 x 1
Allen Key

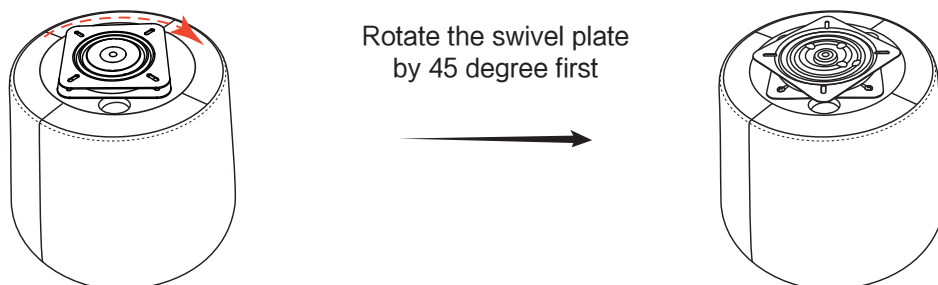


Assembly Instruction:

Step 1: Locate the hardware pack attached to the Chair Base (A). Make sure all parts and hardware are present before assembly. Assemble on a soft and smooth surface to prevent damage to product.

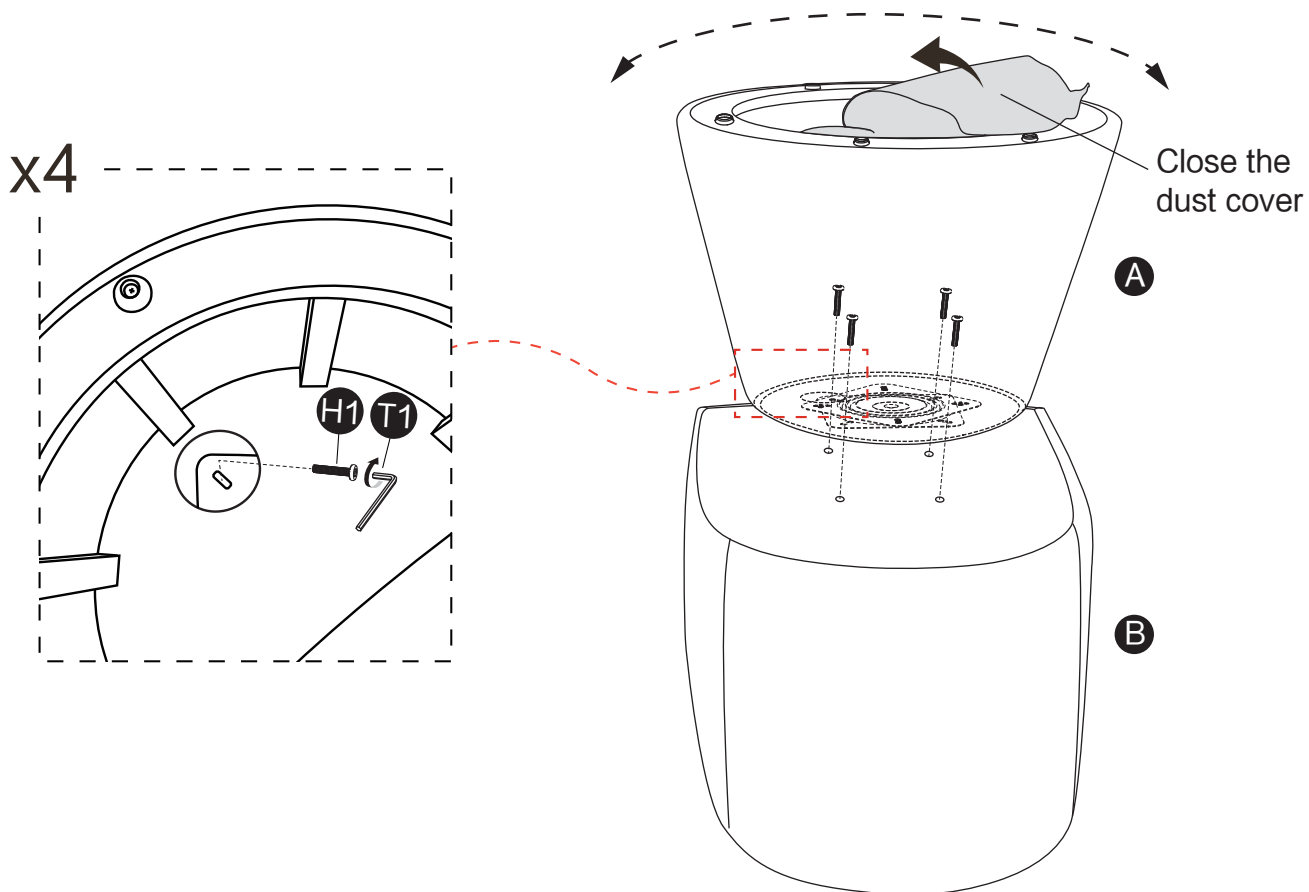


Step 2: Rotate the swivel plate by 45 degree.



Step 3: Attach the Chair Base (B) to Chair Body (A), using Bolts (H1) and Allen Wrench (T1).

Note: Loosely attach the bolts one by one and keep them loose. Do not fully tighten. After loosely attach the first bolt, rotate the base to attach the next one. After all 4 bolts are attached, use Allen Wrench (T1) to tighten.



Step 4: Assembly complete. Take a spin and enjoy.

